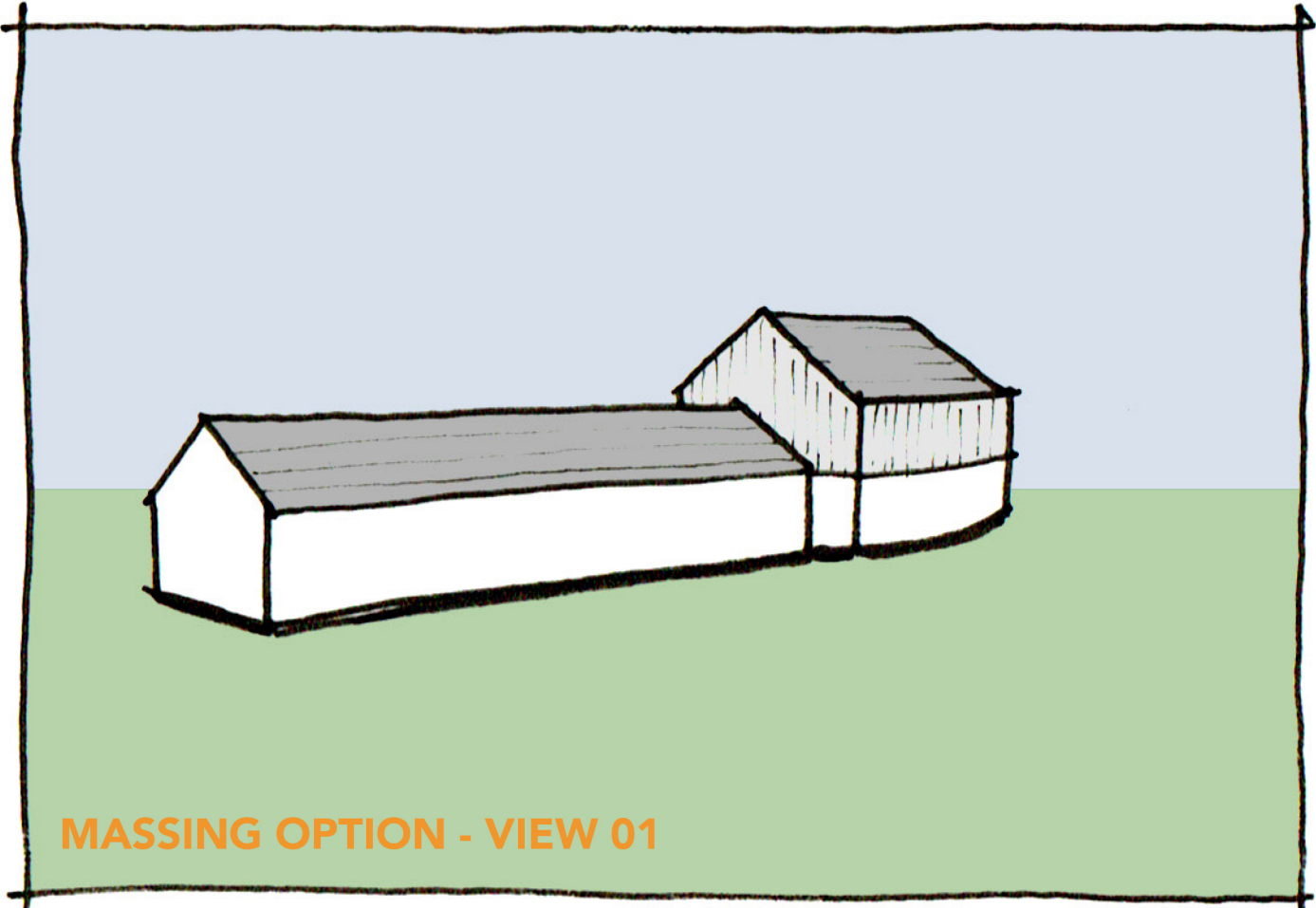
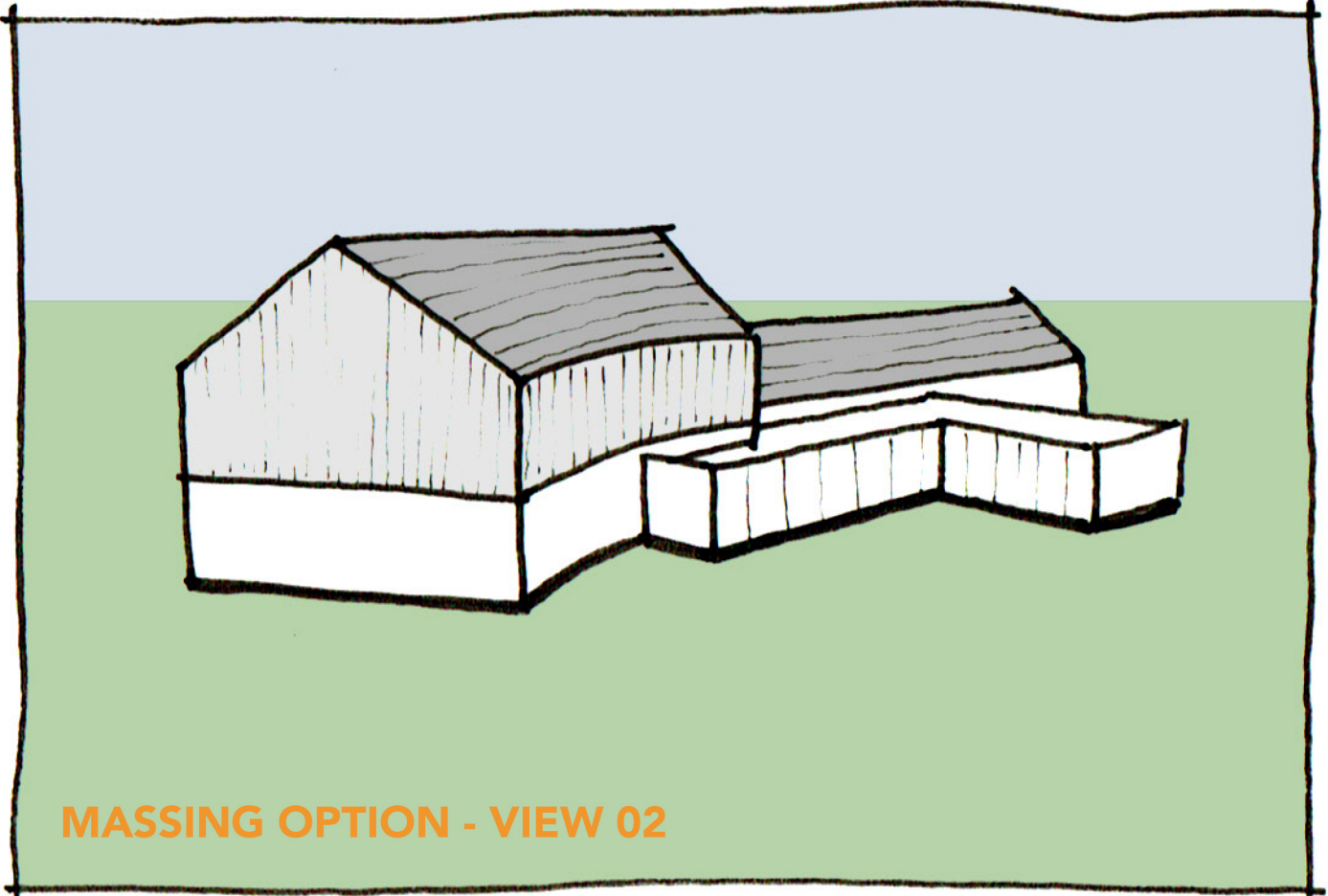


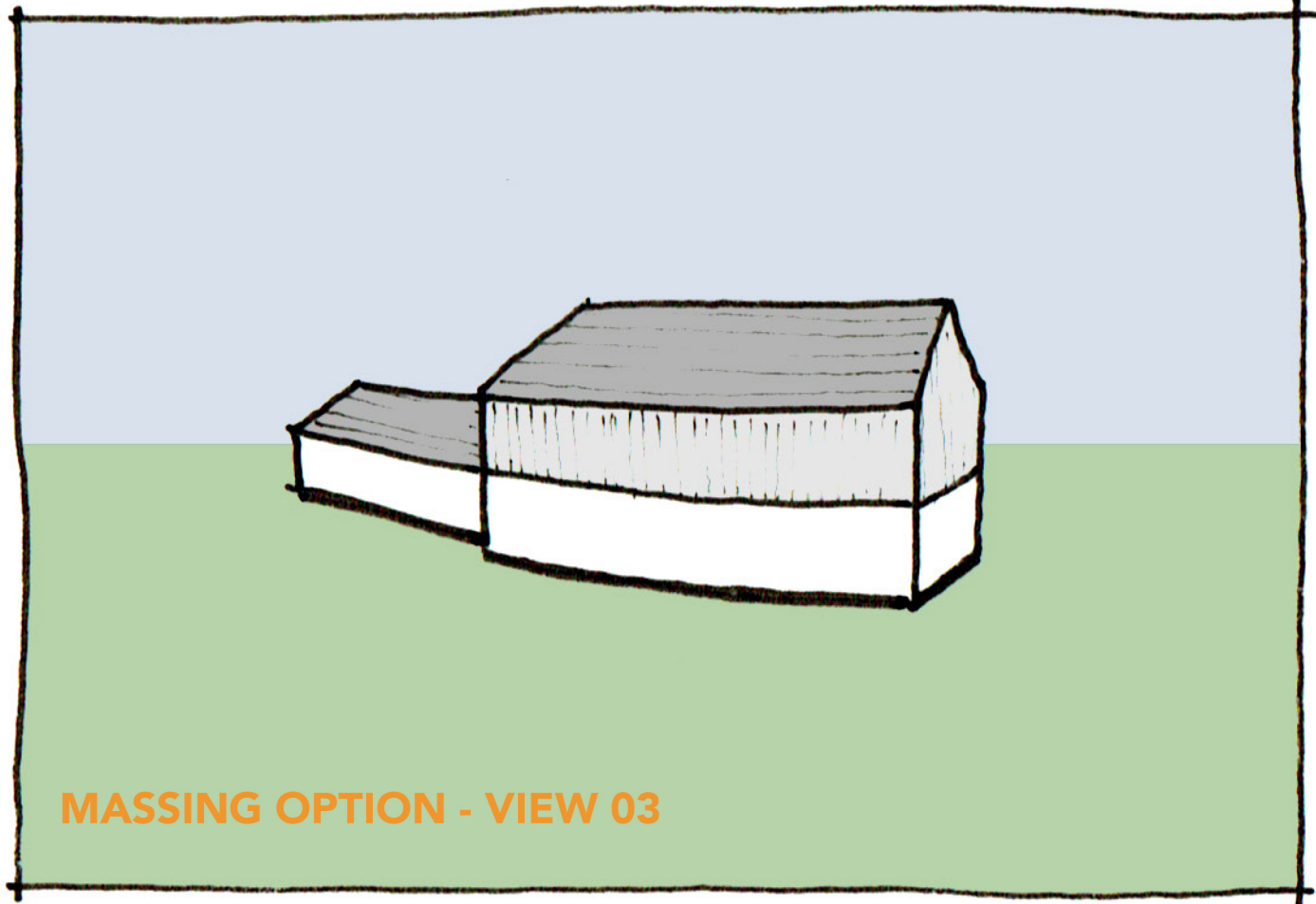
FLOOR AREA EXISTING: 216.5 SQM
FLOOR AREA PROPOSED: 636.8 SQM



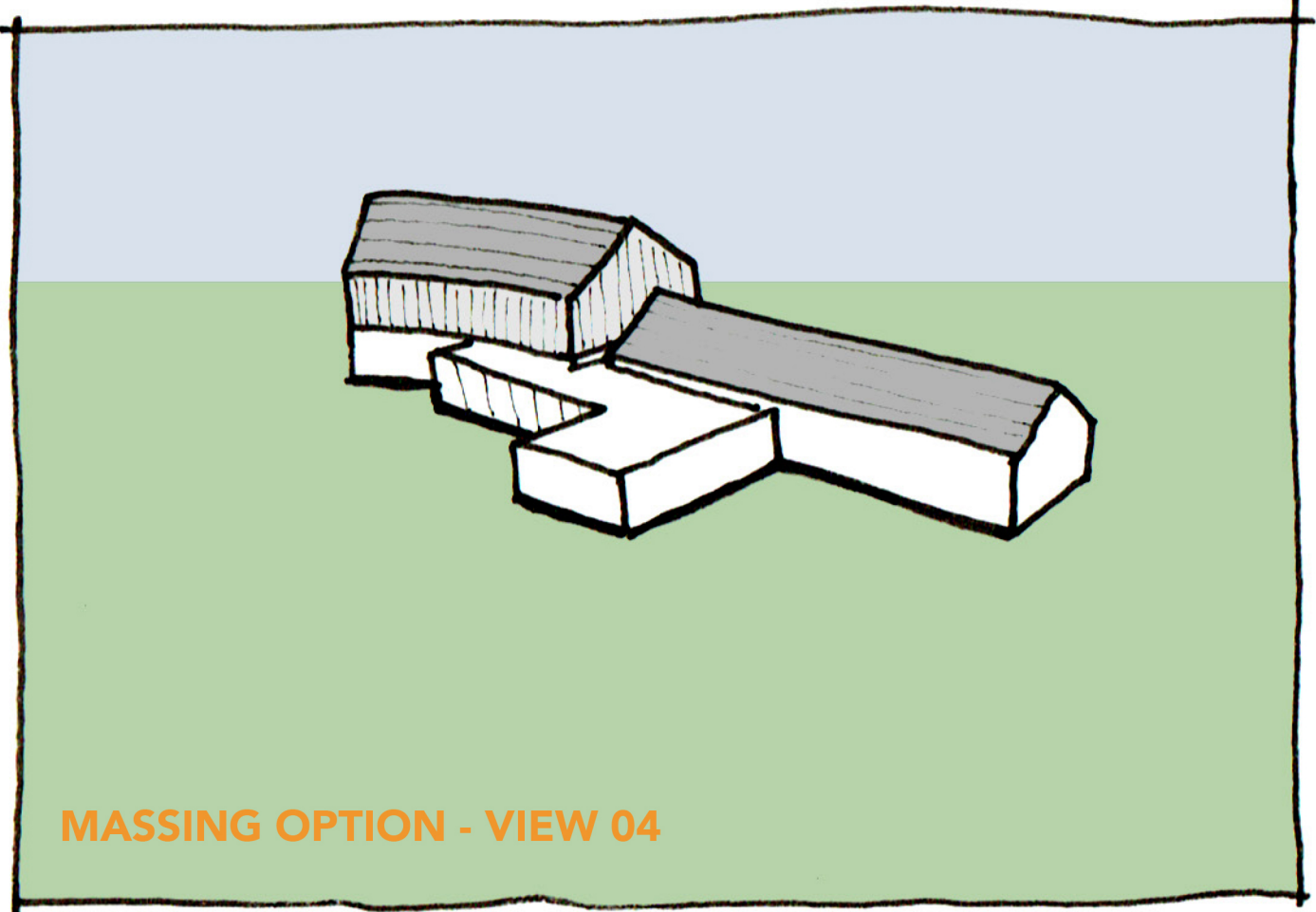
MASSING OPTION - VIEW 01



MASSING OPTION - VIEW 02



MASSING OPTION - VIEW 03



MASSING OPTION - VIEW 04

COPYRIGHT ©
This drawing is copyright and issued in confidence. It must not be copied, used or disclosed, in whole or in part, to third parties without written permission. It remains the property of JSA Design Group Ltd whose registered office is Salford Bridge Studios, Bold Lane, Derby, DE1 3NT and must be returned on request.

NOTES:

1. ALL DIMENSIONS ARE IN MILLIMETERS UNLESS STATED OTHERWISE
2. DO NOT SCALE FROM THIS DRAWING. WORK FROM DIMENSIONS ONLY
3. THIS DRAWING IS TO BE READ IN CONJUNCTION WITH ALL RELEVANT PROJECT DOCUMENTS, ALONG WITH ANY DESIGNS PREPARED BY SPECIALIST SUB-CONTRACTORS AND DESIGNERS
4. ANY DISCREPANCIES ENCOUNTERED ON SITE ARE TO BE REPORTED TO THE ARCHITECT IMMEDIATELY

REVISION NOTES:

REV	DATE	DRAWN	CHECKED	DESCRIPTION
A	13.05.21	GC	CJW	FLOOR AREA INCLUDED

DIFFERENT. BY DESIGN.

01332 460044 hello@jsa.design www.jsa.design

CLIENT:
GALE FAMILY

PROJECT TITLE:
STONECROFT, MAIN ROAD, NOTTINGHAM, NG13 9DD

DRAWING TITLE:
CONCEPT LAYOUT OPTION 01

SCALE:	SHEET SIZE:	DRAWN:	CHECKED:
1:200	A1	CJW	GR

PROJECT REF:	DRAWING NO:	REV:
A21-007	SK01	A

DATE:	STATUS:
APRIL 2021	CONCEPT